

LYNX[®] NGT-9000

ADS-B compliance just got easy.

The award-winning and patented Lynx line of ADS-B transponders transform cockpits and expand pilot situational awareness.

The display of the Lynx system has been optimized by utilizing touchscreen technology. With the swipe of a finger the unit can display traffic, weather and terrain. It is a great leap forward in display technology, one that can be updated and

configured for almost any aircraft in any environment.

Designed as a form-fit replacement for your legacy transponder, the Lynx NGT-9000 is your ultimate panel mounted ADS-B solution.



SAFE AND
SECURE SKIES

KEY FEATURES

In addition to being a new-generation 1090ES transponder, the NGT-9000 brings a host of additional capabilities into your aircraft including:

- > 978 / 1090 MHz Dual-band receiver provides traffic and weather
- > Patented L3Harris Lynx Tail provides flight ID, aircraft type and the ground speed of other ADS-B traffic
- > Intuitive full-color, touchscreen interface optimized for cockpit environments
- > Full-color moving maps
- > Full-color graphical and textual weather displays
- > Built-in interface and display for the WX-500 Stormscope[®] Lightning Detection System
- > Built-in WAAS/GPS
- > ARINC 429, RS-232 and RS-422 output to easily interface with many panel displays
- > Optional Class B embedded Terrain Awareness Warning System (eTAWS)
- > Optional ADS-B Traffic Advisory System (ATAS) aural alerting capability announces position of intruder aircraft and warns in busy traffic patterns
- > Active traffic alerting capability with TAS or TCAS 1 options
- > Wi-Fi ADS-B traffic and weather to flight apps like ForeFlight using the included hardware

DISCOVER MORE:

www.L3Harris.com/Lynx



LYNX NGT-9000

MORE THAN JUST TRAFFIC INFORMATION.

En route and Airport Weather, NOTAMs and TFRs

The Lynx NGT-9000 displays subscription-free ADS-B weather data, such as METARs, AIRMETs, SIGMETs and NEXRAD information, overlaid on a moving map. A second map page shows Winds and Temps Aloft data. This arrangement allows the pilot to quickly page through graphical weather screens and view large amounts of data without overloading a single page. A touch of the finger on the graphical weather map brings up corresponding textual data of the highlighted station or weather icon.

With the Lynx family of ADS-B products, you will receive up-to-the-minute broadcast information regarding Notice to Airmen (NOTAMs) and Temporary Flight Restrictions (TFRs) in graphical and textual form. On the weather map, touching an airport or weather icon (SIGMET/AIRMET) on the graphical side of the NGT-9000 map brings up its corresponding textual data. This data is useful in all phases of flight in planning proper routes and providing information about en route and destination airports.



NEXTGEN ACTIVE TRAFFIC ENABLEMENT® IN THE NGT-9000+

SHOWING AND ALERTING YOU TO WHAT OTHERS DON'T.

Only Lynx has the ability to combine ADS-B Traffic and Active Traffic (ATAS or TCAS I option) in the same compact panel mounted unit. The Lynx NextGen Active Traffic system blends ADS-B with active traffic data, providing an uninterrupted display and traffic alerting of aircraft equipped with Mode A, C and S transponders.



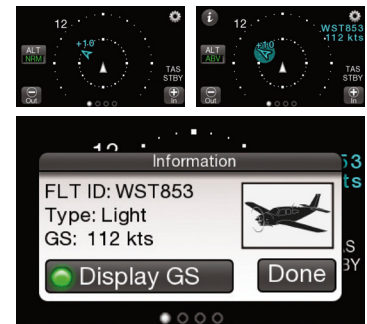
Subscription-free Information



Winds Aloft



Flight Restriction Areas (TFRs)



PATENTED LYNX TAIL GIVES YOU INCREASED SITUATIONAL AWARENESS.

To further enhance your situational awareness, the Lynx NGT-9000 features patented Lynx Tail. When a participating ADS-B aircraft enters the NGT-9000's flight envelope, Lynx Tail provides detailed information including flight ID, ground speed and aircraft classification with corresponding icon.



SHARE THE VIEW.

View ADS-B traffic and weather data on compatible flight displays and many popular iPad and Android pilot apps.



ATAS

Optional ADS-B Traffic Advisory System (ATAS) aural alerting announces the range, bearing and relative altitude of intruder aircraft through the cockpit audio system. Pilots will hear warnings such as “Traffic, Traffic, 3 O’Clock High, 2 Miles.” The ATAS option adds this audio capability to ADS-B Traffic on any NGT-9000 model and visual indication of the alerted traffic appears on the NGT-9000 display. Unlike older alerting systems, the Lynx ATAS feature provides alerting for aircraft flying at any altitude, including airport pattern traffic below 500’ AGL.



STORMSCOPE®

LIGHTNING DETECTION DISPLAY.

When paired with Stormscope WX-500 Lightning Detection System, the Lynx screen will display real-time lightning data at ranges of 25-200 nmi. Even with datalink weather, nothing provides the accuracy and timeliness of a Stormscope system for mapping lightning activity and associated weather threats like wind-shear, turbulence and hail. The WX-500 lets you choose between strike and cell mode, depending on your preference. Minimizing the transponder screen enables pilots to view traffic and lightning on the same display, providing a complete picture of hazards surrounding your aircraft.



TERRAINVISION™ OR eTAWS

ELEVATING AWARENESS

TerrainVision helps pilots get an accurate lay of the land by providing color-coded depictions of the surrounding topography and land-based obstacles. It is an economical solution for fixed-wing and helicopter platforms where terrain reference is desired but aural and graphical alerting are not required.

The Lynx Class B embedded Terrain Awareness Warning System (eTAWS) option provides terrain alerting through both graphic and aural warnings. The color-coded terrain screen surveys out to 24 nmi and will alert when a Controlled Flight Into Terrain (CFIT) is imminent. Alerts for Negative Climb Rates and other Ground Proximity Warnings (GPWS) are also included with Lynx eTAWS.

MODEL COMPARISON

LYNX	NGT-9000	NGT-9000+	NGT-9000D	NGT-9000D+
ADS-B Out				
1090 MHz Mode S ES:	■	■	■	■
ADS-B In				
978 MHz UAT:	■	■	■	■
1090 MHz:	■	■	■	■
Internal WAAS/GPS:	■	■	■	■
Wi-Fi Capable:	■	■	■	■
Touchscreen Display:	■	■	■	■
MFD Display Interface:	■	■	■	■
Traffic: ADS-B, ADS-R, TIS-B:	■	■	■	■
Weather (FIS-B):	■	■	■	■
eTAWS (optional):	■	■	■	■
ATAS (optional):	■	■	■	■
NextGen Active Traffic (optional):	—	■	—	■
Antenna Diversity (optional):	—	—	■	■

Note: Remote mount models offering the same options are also available.

SPECIFICATIONS

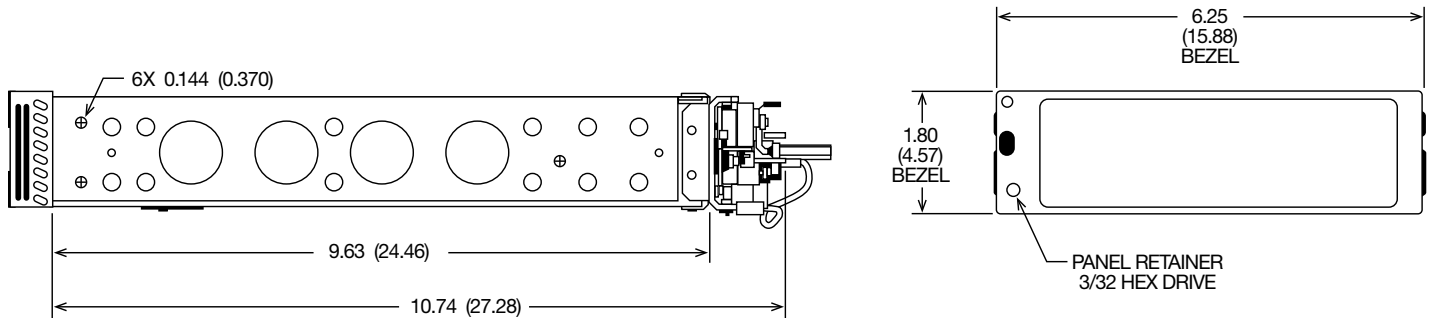
NGT-9000 SERIES

PHYSICAL DESCRIPTION

Size (inches):	1.80" (H) x 6.25" (W) x 11.37" (L)
Weight:	2.96 lb. (1.35 kg)
Mode S Transponder Power:	125W min/250W max
Temperature:	-20 to +55° C (-4 to +131° F)
Operating Altitude:	55,000 ft (16,800 m)
Transponder Type:	Mode A/C, S and ES
Warranty:	3-Years from date of purchase

TSOs

C112d:	Mode S
C113a:	Airborne Multipurpose Electronic Display
C118a:	TCAS I
C145c:	GPS
C147:	Traffic Advisory System
C151c:	Terrain Awareness and Warning System
C154c:	UAT ADS-B
C157a:	Aircraft Fight Information Services-Broadcast (FIS-B)
C166b:	ADS-B, TIS-B 1090MHz
C195b:	ADS-B Aircraft Surveillance Applications



Lynx touchscreen display technology

Lynx touchscreen display technology operates similar to a Personal Electronic Device (PED). The screen's touch and swipe sensitivity has been human engineered to work in the most demanding flight environments where turbulence or moisture may be a concern.



Lynx

© 2020 L3Harris Technologies, Inc. | 05/2020

This document consists of basic marketing information that is not defined as technical data under EAR Part 772. L3Harris Technologies is an agile global aerospace and defense technology innovator, delivering end-to-end solutions that meet customers' mission-critical needs. The company provides advanced defense and commercial technologies across air, land, sea, space and cyber domains.



19810 N 7th Ave.
Phoenix, AZ 85027
t (623) 445-7070
www.L3Harris.com/avionics