

## **ADS-B XTEND™**

### Low Altitude and Surface ADS-B Coverage

Automatic Dependent Surveillance-Broadcast (ADS-B) Xtend dual-band receivers allow unmanned aircraft systems (UAS) operators to reduce gaps in radar coverage for improved situational awareness and enhanced operational safety.

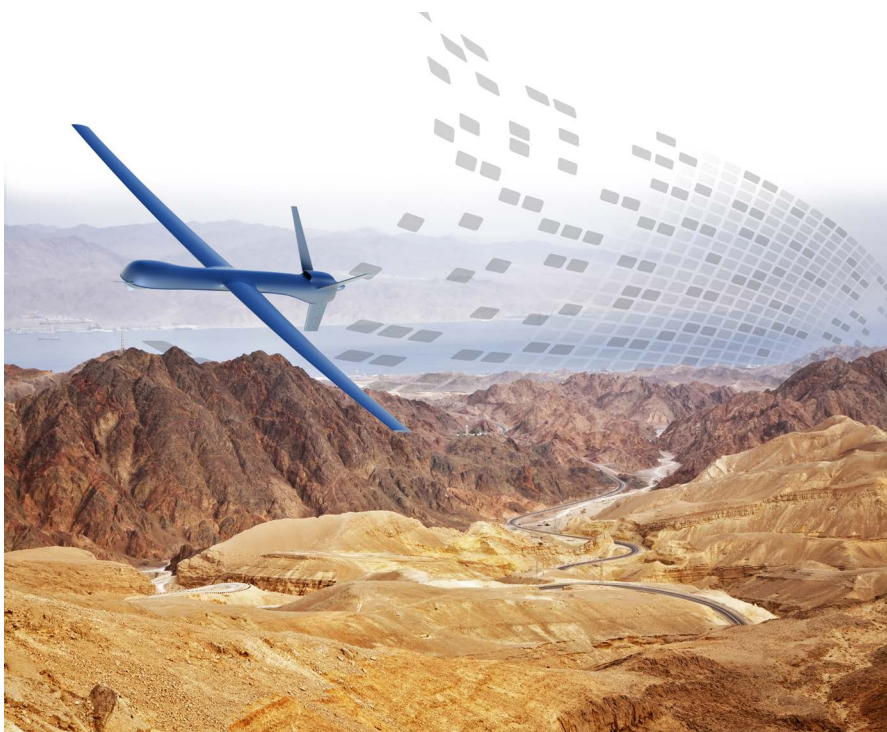
#### **EXTENDS COVERAGE AT LOW ALTITUDE**

ADS-B Xtend closes existing gaps in ADS-B coverage, providing UAS operators with real-time views of other aircraft flying within coverage gaps at low altitudes — and ensuring low altitude surveillance of ADS-B equipped aircraft for UAS asset tracking and sense and avoid (SAA) systems. At less than 10 lbs per unit, the portable device allows for a quick and easy deployment. Each unit can be secured to any infrastructure on as little as a 2"-4" pipe. ADS-B Xtend is L3Harris' latest step in developing

the most comprehensive situational awareness solution for UAS operators.

#### **INTEGRATES WITH EXISTING DATA FOR TOTAL SITUATIONAL AWARENESS**

ADS-B Xtend data is fused with L3Harris' NextGen data, an air traffic control (ATC)-quality data feed that was created to enhance situational awareness across the airfield in both movement and non-movement areas. By incorporating ADS-B Xtend data with NextGen data, users obtain a more complete and comprehensive view of the surrounding airspace.



## Total Airspace Coverage

### BENEFITS

- > Combines with other sensors and data for safer UAS operations
- > Customizable for unique systems integration
- > Fills low altitude and surface data gaps
- > Flexible and portable for stationary and roaming coverage
- > Improves quality, accuracy and reliability of flight tracking data
- > Integrates into L3Harris' BVLOS software products and services

## INTEGRATED SOLUTIONS: ADS-B XTEND AND THE L3HARRIS BVLOS APPLICATION SUITE

ADS-B Xtend augments the surveillance data available to RangeVue, L3Harris' airspace situational awareness visualization tool designed specifically for UAS operations. RangeVue provides operators with real-time manned and unmanned aircraft tracking data, flexible background maps, and sensor network information. With RangeVue, UAS operators, UAS fleet managers, public safety agencies and regulators have complete awareness of their airspace.

### PHYSICAL CHARACTERISTICS OF ADS-B XTEND™

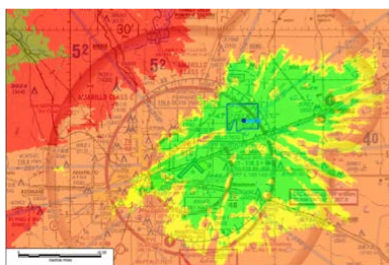
#### DIMENSIONS

With bracket	21 ½" x 10 ¾" x 7 ½"
Without bracket	12 ½" x 10 ¾" x 7 ½"

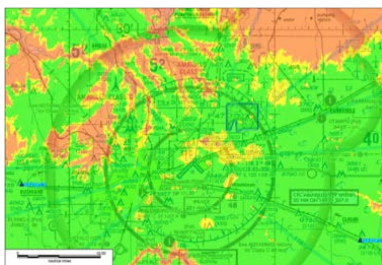
#### WEIGHT

With bracket	9.6 lbs
Without bracket	6.4 lbs

### ADS-B Xtend added coverage analysis in Amarillo, TX



Coverage before ADS-B Xtend deployment



Coverage after ADS-B Xtend deployment

### MORE ABOUT L3HARRIS COMMERCIAL UAS SOLUTIONS

L3Harris provides safety-critical, aviation-grade solutions that integrate UAS in the National Airspace System (NAS). Our offerings include airspace characterization services, the Harris NAS-wide air traffic surveillance data feed, commercially-available cooperative and non-cooperative surveillance sensors, software applications for UAS operations support, and engineering services for design and deployment of airspace systems. L3Harris technologies enable safe and routine beyond visual line of sight (BVLOS) operations for UAS.

<https://www.harris.com/solution/unmanned-aerial-systems-uas>

### ADDITIONAL BENEFITS

- > Locally deployable sensor and relay for low altitude ADS-B coverage
- > Self-contained antenna, processing, and communications system with low size, weight, and power
- > Networking options include both cabled ethernet as well as internal wireless cellular connectivity
- > Designed to meet system safety requirements to include remote maintenance monitoring

ADS-B 08/19 JP

© 2019 L3Harris Technologies, Inc. | 08/2019

#### Non-Export-Controlled Information

L3Harris Technologies is an agile global aerospace and defense technology innovator, delivering end-to-end solutions that meet customers' mission-critical needs. The company provides advanced defense and commercial technologies across air, land, sea, space and cyber domains.



**L3HARRIS™**  
FAST. FORWARD.

1025 W. NASA Boulevard  
Melbourne, FL 32919