

SYMPHONY® PUBLICVUE™

Airport Noise Monitoring and Reporting for the Public

PublicVue is a Web-based solution that provides the public with accurate, complete and reliable visualization of aircraft traffic. The tool includes extensive analytical capabilities for submitting community complaints. PublicVue utilizes L3Harris NextGen surveillance data providing the most comprehensive view of flight activity around the airport. PublicVue is hosted and maintained in a state-of-the-art data center.

Flight following is very useful for historical analysis (but works in near real-time too). Aircraft can be tracked and played in forward or reverse with a choice of rewind/fast forward speeds to conduct extensive analysis.

The ability to produce a slant angle or point of closest approach permits home owners to qualify the vertical, horizontal azimuth of slant angle of an aircraft in relationship to an address that was added and georeferenced.

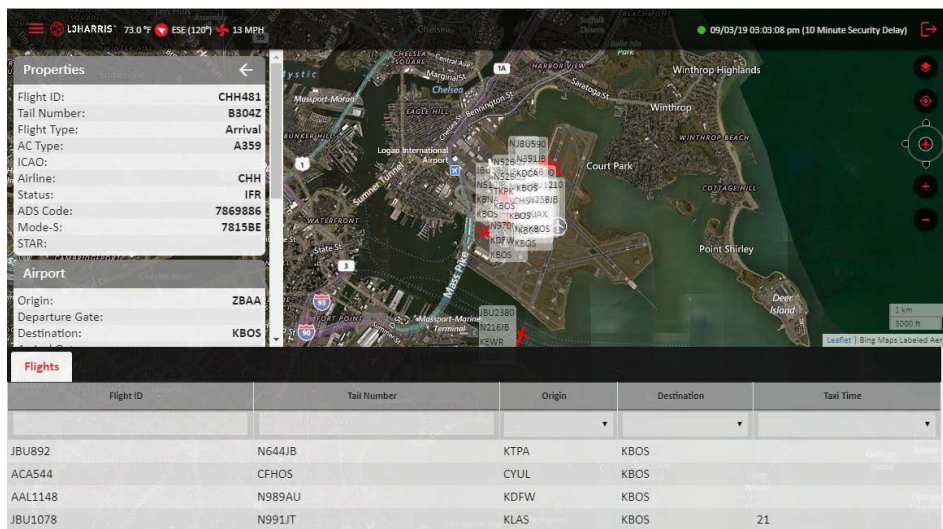


BENEFITS

- > Permits the public to select and use their preferred browsers versus only one format
- > Eliminates inability of tablets and smart phones to display the system vs. Flash-based systems that do not work on tablets and smart phones
- > Permits the public to follow, capture and review (in near real-time) operations in the vicinity of their homes, schools and businesses
- > Allows airport staff to focus on analysis rather than data entry Users can view and print submitted reports for authentication

FEATURES

- > High definition, configurable displays run on most web browsers
- > Tablet and smart phone accessibility
- > Historical replay for flight tracking options
- > Information available in near realtime with a 10 minute security delay
- > Fully integrated complaint creation auto-populates flight information
- > Map feature displays relative aircraft position, bearing and altitude in relation to user's mobile device location
- > Address Lookup and Locate Me features enable public to define location and show relative position of the aircraft to the defined location
- > Intuitive, user customizable displays, including seven different map overlays and real-time weather
- > Tabular data supports map filtering of arrivals, departures and overflights for public users who are interested in analyzing particular operations
- > User configurable flight data tags, popup labels, icon sizing and colorization
- > Flight following with optional display of the full flight path and slant angle feature shows homeowners the exact route and profile of a flight in the vicinity of their location
- > Fast deployment allows the system to be up and running in days



PublicVue shows homeowners the exact route and profile of a flight in the vicinity of their location.

ADDITIONAL BENEFITS

- > Mobile devices such as tablets and smart phones integrate GPS-based position/location which allows for precise pin-pointing of user's location vs. aircraft with GPS-enabled devices such as smart phones and tables
- > Locate or center on a particular address enables the public to see ground tracks in relation to the airport, flight patterns and runway orientation
- > Multiple mapping sources provide users with an aircraft's operation in the vicinity of their location
- > The ability to quickly toggle from a street map to an air navigation map helps users understand flight patterns at the airport
- > Tabular displays help users quickly find aircraft of interest and permits analysis both in near real-time or historically
- > Icons can be tailored by color and size to highlight or identify certain operations or aircraft
- > Data tags may be easily configured to display important information such as altitude, speed and compass heading

For more information call us toll free at 855-890-5137 or email CAS@L3Harris.com

www.symphonycdm.com

Symphony® PublicVue™ww

© 2019 L3Harris Technologies, Inc. | 07/2019

Non-Export Controlled Information

L3Harris Technologies is an agile global aerospace and defense technology innovator, delivering end-to-end solutions that meet customers' mission-critical needs. The company provides advanced defense and commercial technologies across air, land, sea, space and cyber domains.



1025 W. NASA Boulevard
Melbourne, FL 32919