



L3HARRIS™
FAST. FORWARD.

REAL-TIME DATA VISUALIZATION FOR PRECISION RESPONSE

Situational Awareness Mapping



SITUATIONAL AWARENESS MAPPING

Eyes on what matters most

When lives are on the line and community safety is at stake, successful responses rely on the timeliness and accuracy of dispatcher decisions. Yet every day, dispatchers face a tsunami of data points to support over 240,000 calls for assistance each year.* Sifting through volumes of information to find actionable intelligence can be overwhelmingly complex.

Situational Awareness Mapping answers the challenge by accessing, aggregating and transmitting secure, data-rich layers to dispatch systems. Dispatchers have a clear view of the complete operational picture, displayed in an easy-to-use and easy-on-the-eyes intuitive interface.

- > Focus on critical points of need with the unique ability to filter maps by agency and areas of operation
- > Coordinate more effective, efficient responses for multiple dispatchers to simultaneously manage multiple incidents
- > Analyze incident response with event and video synchronization and playback for forensic review

*MentalFloss.com March 29, 2019

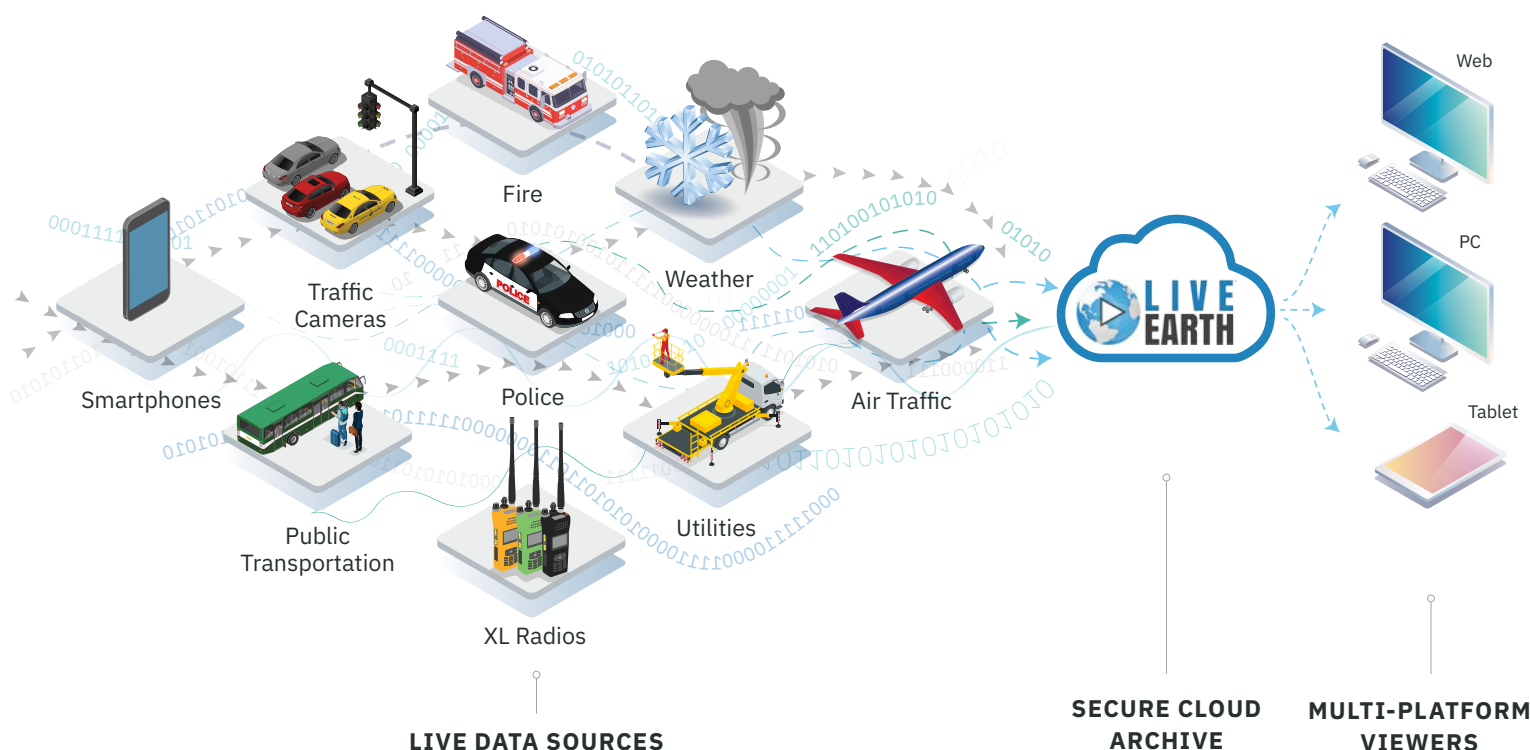


OVERCOME INFORMATION OVERLOAD

Situational Awareness Mapping is part of the L3Harris portfolio of command and control solutions. Actionable intelligence is at the heart of these technologies—giving users only the information they need, at the point of need.

The engine behind this solution is Live Earth®, a cloud-based data visualization platform delivering real-time feeds in a single, simplified view. Live Earth is a member of the Mission Critical Alliance (MCA)—a partner program for best-of-breed, interoperable technologies that reduces risk, time and expense for customer-driven system integrations.

Multiple data layers synthesized into essential dispatch information



GET A CLEAR VIEW OF YOUR COVERAGE AREA

Situational Awareness Mapping includes several core technologies and new applications can be easily added as needed.



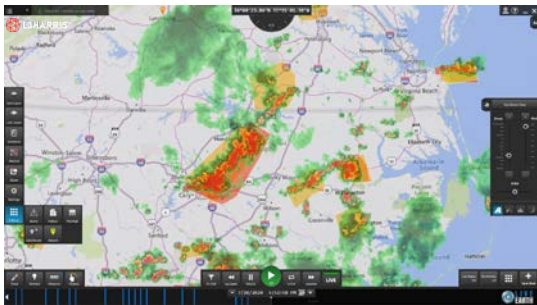
Geolocation

Geolocation data is collected from any device with GPS, including radios and smartphones. Easily locates the closest teams for incident response and a variety of support locations including nearest hospitals for patient transport.



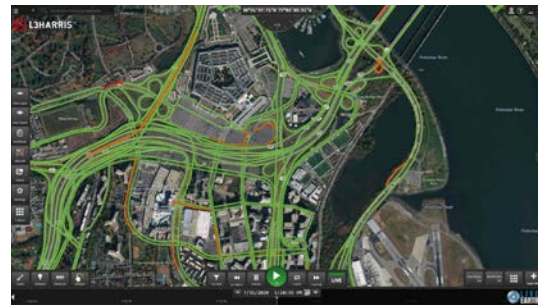
Traffic and Body-Worn Cameras

Video data from stationary CCTV cameras, traffic cameras, dashboard and body-worn cams provides critical information to support the security and safety of the community and first responders. Dispatchers have real-time access to traffic flow and congestion patterns, surveillance of parking and walkways, and personnel activities during response.



Weather

Weather data is collated and streamed from multiple sources. Dispatchers view real-time threats of dangerous wind speeds, challenging precipitation scenarios, as well as air quality, earthquakes and wildfire alerts.



Transportation

Dispatchers can track the impact of special events, weather and accidents affecting all area transportation including airports and flights, maritime traffic, bus and train routes.



MCA partners are currently developing future technologies to support the L3Harris portfolio of command and control solutions for public safety, utilities and transportation. These open standards-based solutions range from video management and CAD systems to license plate readers, emergency response phones and gunshot detection technologies. Please contact your L3Harris representation to learn more.

L3Harris.com/mission-critical-alliance



FAST. FORWARD.



Mission Critical Alliance Member

L3Harris Mapping

© 2020 L3Harris Technologies, Inc. | 08/2020 BR2304

L3Harris Technologies is an agile global aerospace and defense technology innovator, delivering end-to-end solutions that meet customers' mission-critical needs. The company provides advanced defense and commercial technologies across air, land, sea, space and cyber domains.

Trademarks and trade names are the property of their respective companies.

