

ADVANCED MODELS

High Performance Reactor and Thermal-Hydraulic Models

L3Harris' advanced reactor and thermal-hydraulic models unlock maximum fidelity and performance from your simulator. The models are based on first principles and advanced numerical techniques and are extensively proven with installations worldwide.

ADVANCED REACTOR KINETICS MODELS

Comet™ and Comet Plus™ are advanced models for the simulation of reactor neutron kinetics based on a rigorous application of first principle physics and advanced numerical techniques.

Comet, primarily applied to the simulation of Pressurized Heavy Water Reactors (PHWRs), solves diffusion equations by using the mesh-centered finite difference method modified by the application of the Generalized Equivalence Theory in the calculation of homogenized parameters.

Comet Plus, used for simulating Light Water Reactors (LWRs) and Gas-Cooled Reactors (GCRs), solves the diffusion equations by using the Nodal Expansion Method (NEM). The NEM represents the flux by a fourth-order polynomial and yields unprecedented accuracy.

Both Comet and Comet Plus are true three-dimensional models. A minimum of one radial node per fuel assembly/channel is used. The neutron diffusion equations are solved at each node at each time step without relying on approximate methods based on a space-time factorization.

Each node takes into account:

- > Xenon, Iodine, Samarium and Promethium concentrations
- > Six delayed neutron groups for LWRs and 15 for PHWRs
- > Decay heat calculations are carried out using a set of 23 decay heat precursors
- > Neutron source strength

- > Fuel burn-up, Plutonium build-up and depletion of burnable poisons, if applicable

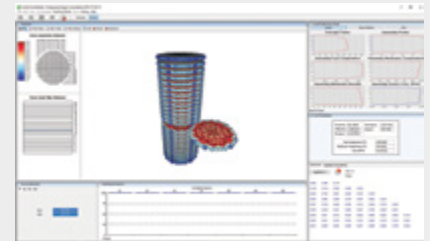
Control rods are treated as individual entities and shadowing effects are fully simulated. The models account for variable enrichment fuel and modern fuel designs.

The calculation of the flux at the in-core detector locations are achieved by reconstructing the flux, as a function of the local nuclear properties, in the nodes where detectors are present. Very localized effects, such as the effect of movements of neighboring rods on detector responses are fully simulated.

Cycle-specific parameters are calculated by Orchid® Core Builder (Orchid CB). This powerful tool features a user-friendly graphical interface to maximize ease of use. For example, adding a detector or changing the real-time model nodalization can easily be done graphically. Orchid CB also provides features allowing the user to rapidly validate the input lattice code neutronic data as well as the output real-time model parameters.

Orchid CB accepts plant data from several typical lattice and fuel design codes such as CASMO, SIMULATE-3, ANC, SCIENCE and others.

Finally, Orchid CB facilitates implementation of Recommendation 6 of INPO's SOER 96-02 to provide cycle-specific simulator training. With Orchid CB's Initial Condition (IC) transfer mechanism, users can easily age core cycles without having to recreate ICs for each new core cycle update.



COMET/COMET PLUS ADVANCED REACTOR KINETICS MODELS

True three-dimensional models for simulating reactor neutron kinetics for PHWRs, LWRs and GCRs. The models are developed and managed with Orchid Core Builder.



ADVANCED STEAM SUPPLY SYSTEM MODELS

ANTHEM™, our advanced thermal-hydraulic model is based on a rigorous application of the equations of mass, momentum, energy conservation and implicit numerical techniques. ANTHEM has been successfully installed and validated on numerous simulators and simulator upgrades currently certified for training.

ANTHEM has been specifically designed to ensure faithful real-time simulation of both single and two-phase flow under all plant operating conditions. The model accurately simulates:

- > Normal and abnormal plant conditions
- > Major transients such as steam line breaks, loss of feedwater, tube leaks, load rejection and turbine trips
- > Draining, filling and venting, as well as nuclear mid-loop operations

A single model is used for all operations without switching to reduced nodalizations or simplified models. The model takes into account such phenomena as feed and bleed cooling, shrink and swell, loop seals, natural circulation, flow stagnation, local boiling and condensation, phase separation and the effect of local buildups of void or non-condensables.

ANTHEM is a non-equilibrium, non-homogeneous, drift flux model. The conservation equations consist of three mass conservation equations for liquid, water vapor and non-condensables, two energy equations for liquid and gas mixture and the momentum equation for the liquid-gas mixture. The mass and energy equations are solved at each node

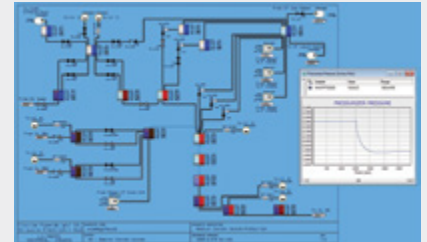
and the momentum equation is solved at each link. The drift flux model is used to resolve gas and liquid velocities from the mixture momentum equation. Nodalization is determined by system geometry and fidelity requirements and is not compromised by either calculation cost or stability constraints. An implicit numerical technique is used to ensure stable response under all conditions.

An ANTHEM model is graphically created and maintained in the Orchid® Modeling Environment (Orchid ME) graphical simulation environment. The seamless integration with Orchid ME provides a number of significant advantages including:

- > Graphical model design
- > Model and code standardization
- > Multiple model configurations
- > Integrated tracking of calibration and reference data
- > Superior graphical testing and visualization environment

ANTHEM has been proven successfully on nuclear and fossil-fueled plant simulators worldwide.

Complementing L3Harris' Orchid® Total Development and Simulation Environment, Comet, Comet Plus and ANTHEM are high performance models that demonstrate our long-term commitment to excellence and innovation.



ANTHEM ADVANCED STEAM SUPPLY SYSTEM MODELS

Non-equilibrium, non-homogeneous models used for all plant conditions and operations. The models are developed and managed with Orchid Modeling Environment.

Advanced Models

© 2021 L3Harris Technologies, Inc. | 03/2021

ANTHEM, Comet, Comet Plus and Orchid are trademarks of L3 MAPPs Inc. All other brand names and product names referenced are trademarks, registered trademarks, or trade names of their respective holders.



8565 Côte-de-Liesse
Montréal, Québec, Canada H4T 1G5
t +1 514 787 4999 | f +1 514 788 1442
power.mapps@L3Harris.com