

MULTI-INTELLIGENCE BIG DATA ANALYTICS

Defining the environment - delivering empowerment

L3Harris is on the forefront of operational data science. Envisioning, designing and fielding a scalable big data analytics system architecture, L3Harris uses Big Data for multi-intelligence processing, exploitation and dissemination that processes large amounts of diverse data. Our unique, agile approach provides efficient ingest and semantic enrichment of the subject data sets and rapid development and employment of analytics that drive extremely complex queries down to seconds, providing near real-time answers to support empowered solutions.

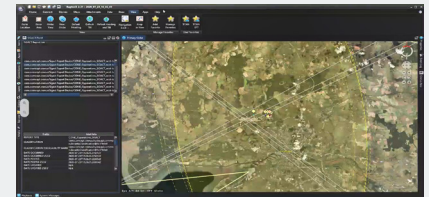


OUR ANALYTIC CAPABILITIES

- > Faceted spatial-temporal search
- > Loitering and co-traveling detection
- > Unusual activity analysis and reduction
- > Geo-fence tripwire alerting
- > Geospatial gazetteering (e.g., enriching locations with place names)
- > Spatiotemporal, parametric (e.g., frequency), identity attribute (e.g., Electronic intelligence notification [ELNOT], selectors) statistical correlation

FUTURE CAPABILITIES

- > Algorithms for geospatial fusion of geo-observables
- > Multisource track correlation
- > Suspicious behavior detection and alerting
- > Video metadata exploitation
- > Enhanced item-of-interest classification and identification



Example interface using artificial intelligence and machine learning based on our Big Data analytics

What is Big Data?

Big Data is a huge collection of data that grows exponentially with time. With its size and complexity, only non-traditional data management tools can store or process it efficiently.



EXPERIENCE IS EVERYTHING

L3Harris is delivering time saving intelligence capabilities to analysts in near real-time. We continue to provide high impact big data architecture solutions for our partners and customers. Among L3Harris' experience, we have:

- > Deployed a suite of analytics and semantic enrichment capabilities on an 80-node cloud computing infrastructure that was designed to support rapid discovery of behaviors of interest according to loosely defined tactics, techniques and procedures and analyst-driven parameters.
- > Deployed a suite of analytics on a cloud computing infrastructure to identify previously undetected signals of interest supporting data collection and discovery capabilities from multiple signals intelligence sensors and quick-reaction capabilities.
- > Developed streaming and batch analytics to be deployed on customer cloud environment which provide near real-time and forensic multi-INT analytics in support of near real-time situational awareness, collection management and dynamic tasking.
- > Deployed an 11-node cloud computing infrastructure to provide metrics-based assessment of operational systems, forensic data replay and additional analytics for correlation and enrichment of multi-INT data.

L3Harrisellsht_BD_2021

© 2021 L3Harris Technologies, Inc. | 04/2021

These item(s)/data have been reviewed in accordance with the International Traffic in Arms Regulations (ITAR), 22 CFR part 120.11, and the Export Administration Regulations (EAR), 15 CFR 734(3)(b)(3), and may be released without export restrictions.

L3Harris Technologies is an agile global aerospace and defense technology innovator, delivering end-to-end solutions that meet customers' mission-critical needs. The company provides advanced defense and commercial technologies across air, land, sea, space and cyber domains.



L3HARRIS™
FAST. FORWARD.

1025 W. NASA Boulevard
Melbourne, FL 32919

t 972 772 7501
ComCept-Products@L3Harris.com