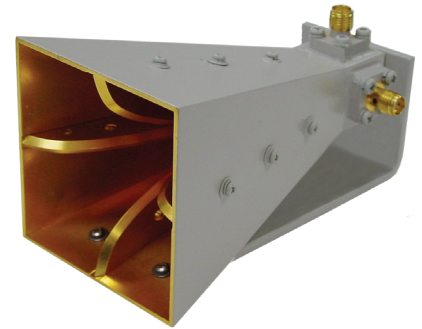




L3HARRIS™
FAST. FORWARD.

AS-48435 QUAD-RIDGED HORN ANTENNA

The AS-48435 dual-polarized quad-ridged horn antenna provides high-gain directional radiation patterns over a wide frequency band. This pyramidal horn has two orthogonally placed input feeds. These provide the capability for simultaneous horizontal and vertical polarization and, with the addition of an optional 90-degree hybrid, selectable right- or left-hand circular polarization. This antenna is ideally suited for feeding high-gain, long-focal-length reflectors for surveillance and direction-finding applications. It is also designed for application as a primary radiator and is capable of handling 10 watts continuous wave and 0.75-kilowatt peak radio frequency (RF) power for transmitting applications.



KEY FEATURES

- > High-gain directional patterns
- > Simultaneous dual linear polarization
- > Power handling of up to 10 watts continuous wave for RF transmit applications
- > Ideal for test, direction-finding or intelligence, surveillance and reconnaissance type platforms

For further details and specifications, contact the factory at antenna.info@L3Harris.com

ELECTRICAL

| | |
|---------------------|--|
| Frequency range | 8.0 – 12.0 GHz |
| VSWR | 3.0:1 (nominal) |
| Gain | 10 - 12 dBil (typical) |
| Polarization | Simultaneous horizontal and vertical Simultaneous RHCP and LHCP w/90° hybrid. |
| Beamwidth | |
| E-plane | 40°- 28° (typical) |
| H-plane | 55°- 26° |
| Cross polarization | -20 dB (nominal) |
| Front-to-back ratio | 20 dB |
| Power handling | 10 W CW, 0.75 kW peak |

MECHANICAL

| | |
|-----------|----------------|
| Connector | SMA female |
| Weight | 1.0 lbs/0.5 kg |

AS-48435 Quad-Ridged Horn Antenna

© 2021 L3Harris Technologies, Inc. | 10/2021 | 61551 | TRP

Nonexport-controlled Information

L3Harris Technologies is an agile global aerospace and defense technology innovator, delivering end-to-end solutions that meet customers' mission-critical needs. The company provides advanced defense and commercial technologies across air, land, sea, space and cyber domains.



L3HARRIS™
FAST. FORWARD.

1025 W. NASA Boulevard
Melbourne, FL 32919