

LEGS[™]

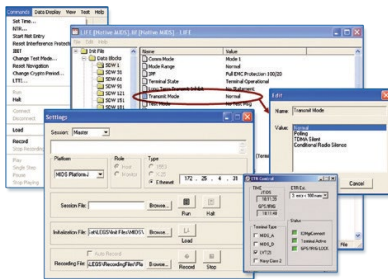
Link 16 Environment Gateway Stimulator

Essential Terminal Support Software:

- > MIDS Terminal Integration for Ground Facilities and Mobile Platforms
- > Terminal Maintenance and Troubleshooting
- > Link 16 System Performance Measurement and Evaluation
- > Ideal for Prime Developers, Field Service Engineers, Test Facilities and MIDS Instructors

INITIALIZE AND CONTROL

The LEGS tool supports the Ethernet, 1553 and Support Port interfaces of all MIDS-LVT, MIDS JTRS and STT terminals. The application implements all the major platform types including Platform A, B, D, I, J, Q, R, S, M, MIDS Army and BATS. The software also implements many of the Class 2 interfaces including Army Class 2M, Navy Class 2 Airborne and Shipboard, Air Force Class 2 (F-15) and LVT(3) FDL.



Included with the application is the Link 16 Initialization File Editor (LIFE). This utility allows you to view initialization files, extract initialization data directly from the terminal, save a copy and even update parameters in real time. Most NDF file formats are implemented. Descriptions of fields and available field settings are displayed in a file structure format in English, making it easy to verify terminal settings. Fields that are set or changed frequently, such as Source Track Number, Stacked Net Numbers, Power and Antenna settings may be saved in Favorites.

Commands used frequently such as load terminal, set time and start net entry are available as icons on the toolbar. Other commands such as NTR enable and disable, reset IPF, initiate IBIT, change

test mode, reset navigation, change crypto period and long term transmit inhibit are accessed through the main menu.

Additional seats are available for installation on customer furnished equipment after initial purchase.

LEGS-LITE

A low-cost version of the LEGS software that does not include the scenario generation or situation display capabilities is available.

LiVER

Simplifies Platform-D connectivity for Windows 7 and 10. LiVER can optionally provide RARP service for assigning IP Address to MIDS-LVT(1) terminals.

Documentation and Training

In addition to the online help, the LEGS software is delivered with a user and installation manual. L3Harris offers a 3-day introductory training course on the operation of this application. Advanced courses are also available.

Tailored Applications

L3Harris can tailor LEGS Remote Interface Modules (RIMs) to support your special requirements. We have developed RIMs for GPS testing, ETR testing, OTAR testing, Voice testing and Navigation testing. And, we have an API to support automated testing using products such as LabView and VEF-Pro. An ICD is available by special request.



Works with All Vendor's MIDS Terminals

KEY FEATURES

- > Terminal initialization/control/status monitoring
- > Detailed recording
- > MIDS reprogrammer
- > Scenario generation
- > Situation awareness

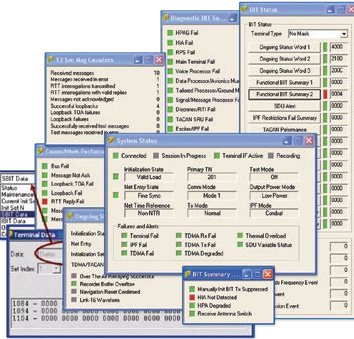
SUPPORTED TERMINAL TYPES

- > MIDS LVT(1) Platform A, B, D, I, Q, R, S and Support Port
- > MIDS-LVT(2) Platform J, JREAP-C and Support Port
- > MIDS LVT(1)/(2) Block Upgrade 2 Platform A, D, R and Support Port
- > MIDS on Ship (MOS) Platform M and Support Port
- > MIDS-LVT(3) FDL and Support Port
- > Class 2 Navy Shipboard, Navy Airborne, Army 2M and USAF F-15
- > MIDS JTRS Platform A, I, J, M, V, W, Support Port and Host Interfaces
- > Small Tactical Terminal (STT) KOR-24A Platform J
- > BATS-D Platform J



OBTAIN TERMINAL STATUS AND DETAILED BIT RESULTS

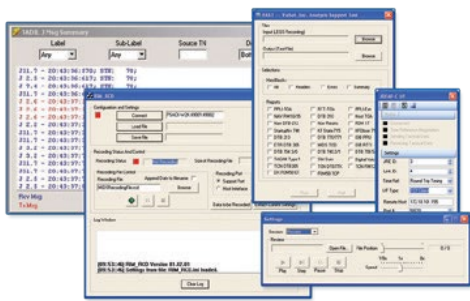
High-level status data is available in the System Status window, with detailed data available through the BIT Status window. BIT results are color-coded red or green and masks are available based on terminal type to gray out BIT results that are not applicable. Every 12 seconds the terminal provides information on the messages processed and this summary can be viewed on the 12-Second Message Counters window.



Further status is available in hex format through the Terminal Data window, including SBIT, IBIT and OBIT as well as the contents of memory locations.

VIEW, RECORD AND REPLAY LINK 16 DATA

Scroll received messages and when connected to the support port, view the loopback of transmitted messages. Messages formatted with the Enhanced Throughput packing structure are also displayed, in a user-selected color. Message data exchanged on the host interface may be recorded, or detailed performance data may be obtained from the Support Port and recorded. Data recordings may be replayed starting at any point within the recording and replayed at speeds from 1/8 to 8 times normal. Pause and restart at any point. Analyze these recordings with L3Harris' Analysis Support Tool provided with the LEGS application, or with Lockheed Martin's STASYS analysis tool, MANDRIL.



PART DESCRIPTION

- > LEGS-MIDS-EXPORT (NON-JTRS)
- > LEGS-LITE
- > LEGS (Includes MIDS JTRS Capability)

LEGS

© 2022 L3Harris Technologies, Inc. | 12/2022 | BCS | 22-DSD-285 | Rev-201

These item(s)/data have been reviewed in accordance with the International Traffic in Arms Regulations (ITAR), 22 CFR part 120.11, and the Export Administration Regulations (EAR), 15 CFR 734(3)(b)(3), and may be released without export restrictions.

L3Harris Technologies is an agile global aerospace and defense technology innovator, delivering end-to-end solutions that meet customers' mission-critical needs. The company provides advanced defense and commercial technologies across air, land, sea, space and cyber domains.

Use of U.S. DoD visual information does not imply or constitute DoD endorsement.

CREATE SCENARIOS AND MAINTAIN SITUATIONAL AWARENESS

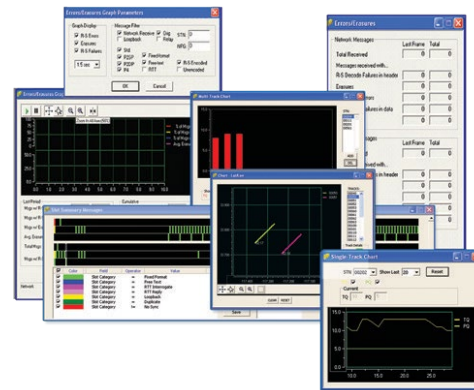
L3Harris' scenario generation utility allows you to define over 500 entities, specifying track numbers, STN numbers and defining platform kinematics. Select a common path such as circle or racetrack, or specify waypoints. Specify platform type, environment, identity, mode codes, strength and call sign. Generate PPLI position reports and surveillance track reports and script their time of appearance and disappearance.



The LEGS Situation Display supports both geotiff and NGA Compressed ADRG maps. View JUs and tracks in user-defined Symbology based on MIL-STD-2525B with a map underlay. Hook tracks and obtain data readouts.

MONITOR TERMINAL PERFORMANCE

View time slot activity in real time, color-coding the slots by NPG, STN, Packing Structure, or other user-defined criteria. View errors and erasures numerically and graphically.



- > LIVER Software (Qty 10 Licenses)
- > LIVER Software (Qty 5 Licenses)



1025 W. NASA Boulevard
Melbourne, FL 32919
t 833 537 6837
CSW.Products@L3Harris.com