

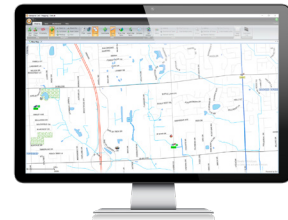


Solutions Designed by Law Enforcement, for Law Enforcement

Tyler Technologies' Enterprise Public Safety suite is intentionally designed for modern and complex agencies.

Multi-jurisdictional and integrated, Tyler's public safety solutions include Computer-Aided Dispatch (CAD), records management, powerful analytics for improving transparency and effectiveness, mobile apps for field operations, corrections, civil processing, and more.

Real-world experience comes from 40% of our employees hailing from the public sector. And with more than 40 years serving the public safety industry, you can put your trust in Tyler Technologies.



L3Harris® Data Enhances Officer Safety & Dispatcher Response Time

L3Harris has partnered with Tyler Technologies to share critical user information with Tyler's Enterprise CAD solution.

Dispatchers now have additional tools for tracking dispatched units, keeping in-field officers safe, and providing backup in emergency situations, including:

- GPS location
- Emergency alerts
- Geofencing
- On-screen keyed radio information

FACT SHEET

Industry-Leading Situational Awareness

Enterprise CAD users benefit from modern features with Tyler's full suite of public safety solutions. Features designed to enhance situational awareness include embedded GIS mapping, Automatic Vehicle Location (AVL), automated unit recommendations, and integrations with RapidSOS and L3Harris for access to 911 caller and officer radio location.

General Enterprise CAD Features Include:

- Interoperability for law enforcement, fire and EMS
- Access to real-time information for faster, better-informed responses
- High scalability and configurability for specific users and workflow

Radio GPS Location

When integrated with Enterprise CAD, L3Harris radios can be easily located on the map via GPS with a name or unit number search. Dispatchers and command staff can quickly follow the movements of ground personnel at a glance with more accuracy.

Keyed Radio Details On-Screen

When a radio is keyed, Enterprise CAD displays the associated unit number or personnel on the marquee-style Event Ticker window — no need to open a separate program or browser. The Event Ticker always shows the most recent entry at the bottom and auto-scrolls as new entries arrive, confirming the source of the latest transmission for dispatchers.

Emergency Button Alerts

Enterprise CAD can also display pop-up messages across all dispatch stations for immediate awareness of critical situations. Should an associated unit be assigned, call details and location are displayed as part of the emergency alert giving dispatchers a focus for quick decision making.

Geofence Trigger Designation

Geofencing allows command staff to define a geographic boundary in CAD. When triggered, along with radio GPS coordinates, dispatchers will receive notifications when a unit:

- Enters or exits a defined geofence
- Enters an active incident area such as hazmat or disaster
- Changes status near a call within a geofence

Geofences can also be used to automatically send messages (such as gate codes for units pulling up to locked gates), notify a unit when they enter or exit a defined geofence, or change fire unit status to en route when leaving the station. Notifications are triggered only by the defined primary device. If a vehicle's GPS is set as primary, the vehicle and radio GPS coordinates won't trigger multiple competing alerts.

Additional Situational Awareness-Boosting Features Include:

- Industry-leading GIS integration with embedded Esri® for accurate mapping
- Fully integrated RapidSOS® capabilities for instant access to life-saving 911 caller location
- AVL capabilities and unit recommendations based on proximity and resources

The Benefits of Integrations

Dispatchers

- Know the location of personnel on foot
- Fewer disparate screens and applications
- Less reliance on deciphering audio transmissions
- Faster response capabilities

Officers

- GPS location capabilities outside of vehicles
- More streamlined communication with dispatchers
- Less reliance on audio transmissions
- Additional information transmitted during emergency situations to help incoming reinforcements

Command Staff

- Increased officer safety
- Better communication between dispatchers and officers
- Paper trail of radio transmission data

The Mission Critical Alliance is a partner program for best-of-breed technology solution providers to openly collaborate to advance the capabilities, compatibility and security of mission-critical solutions.



PublicSafetyInfo@tylertech.com
tylertech.com/publicsafety



MCA@L3Harris.com
L3Harris.com