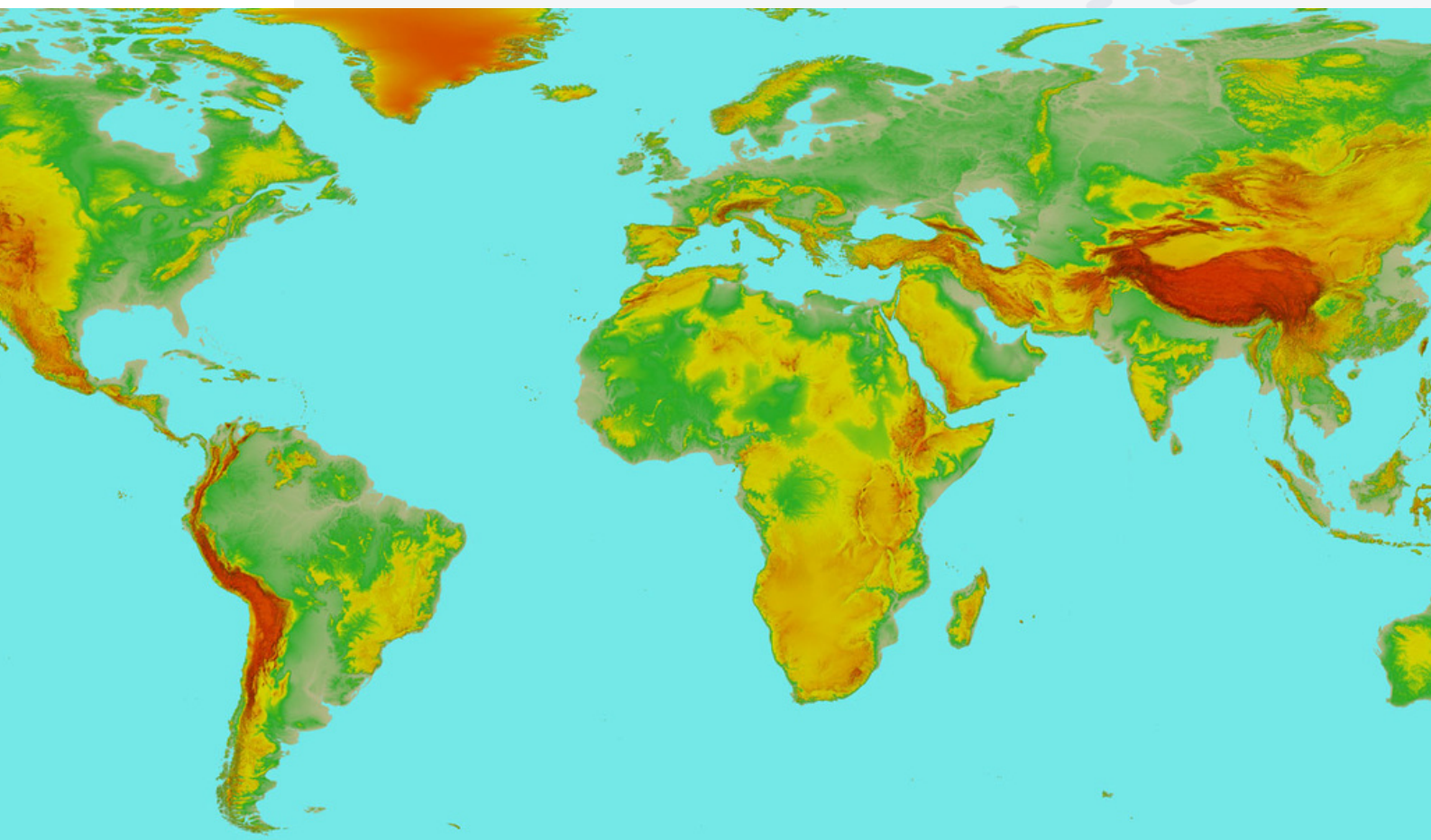


---

# PLANETDEM 30M GLOBAL ELEVATION DATASET



---

DATA SHEET  
AUGUST 2022

# Accurate and reliable global elevation data

## HIGH QUALITY 30M & 90M RESOLUTION

Benefit from 30m and 90m elevation data covering all emerged land of the planet that provide a detailed and efficient 3D representation of the environment. Offering one solution for your worldwide operations!

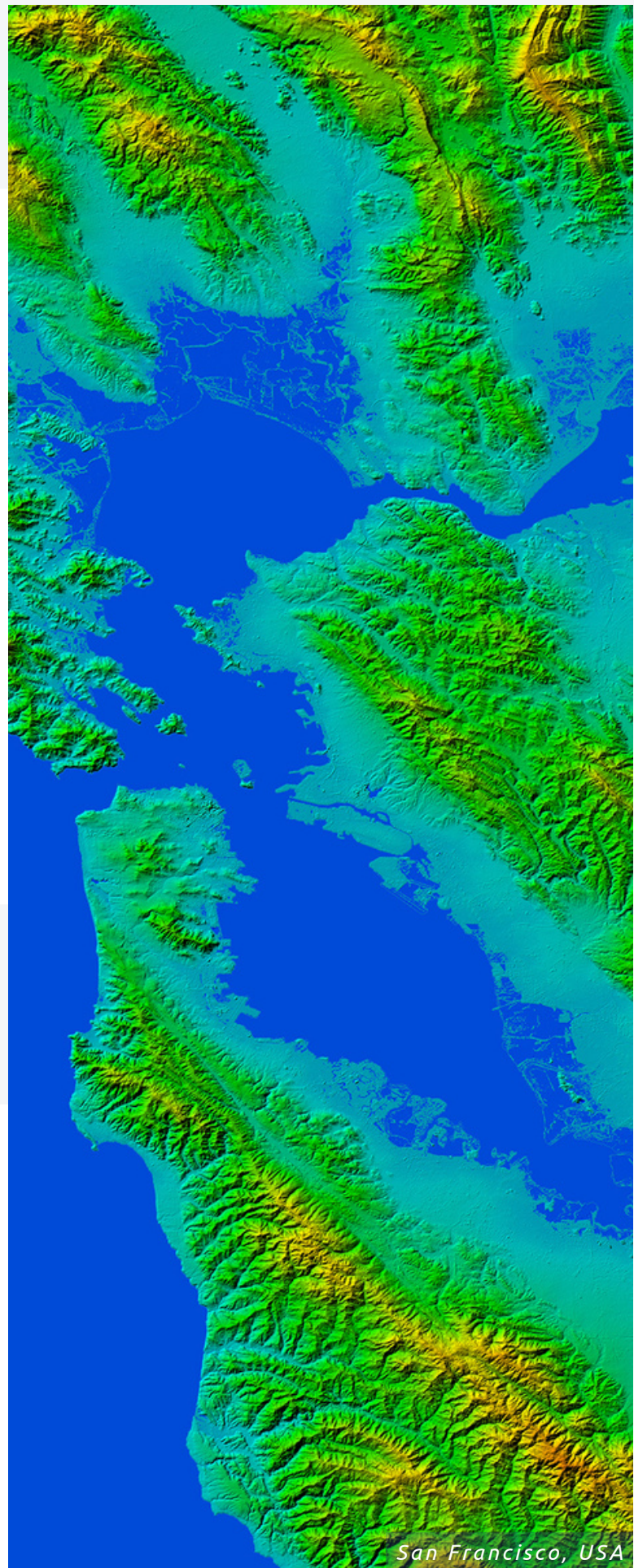
## SEAMLESS DIGITAL SURFACE MODEL

Power your solutions with totally enhanced, void-filled, and corrected elevation data at the global scale that ensures accurate analysis.

## Trusted elevation data for civil and military use cases

## READY TO INTEGRATE AND OFF-THE-SHELF

Save time on data handling! PlanetDEM elevation data is ready-to-use in your preferred environment, from GIS applications, terrain modeling solutions, to military simulation and training tools. Offered in multiple formats, the product comes with thorough metadata and documentation.







## PLANETDEM 30M GLOBAL ELEVATION DATASET

PlanetDEM is an enhanced and corrected global Digital Surface Model (DSM) processed with best available sources, including ALOS World 3D - 30m and NASADEM, and years of experience developing and improving elevation data.

### KEY ADVANTAGES

- Off-the-shelf, immediately deliverable
- Proprietary data processing, correction and enhancements
- **Correction of 36%** of the source data tiles
- Thorough metadata and documentation
- Offered in multiple formats
- Defense industry track record

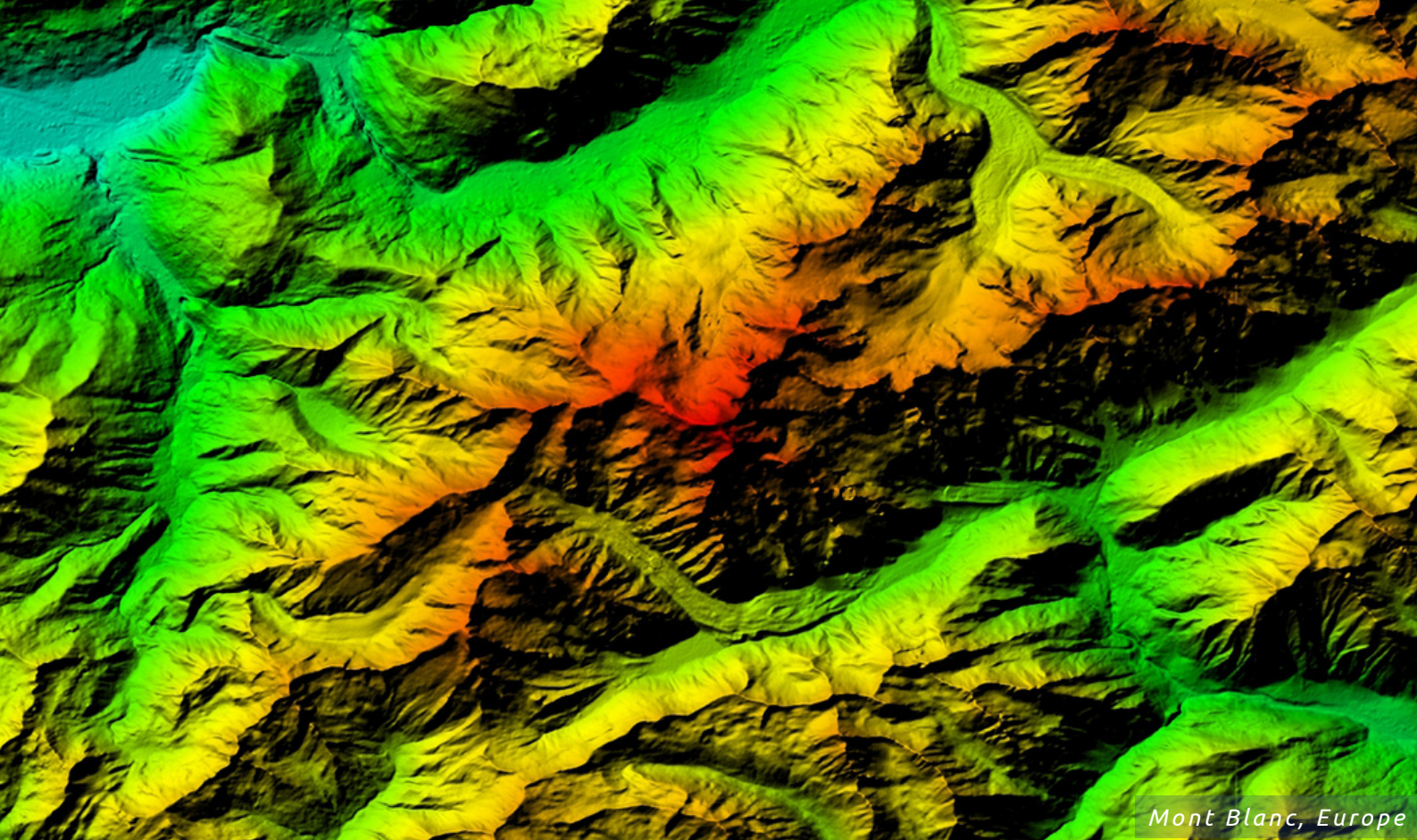
### TECHNICAL SPECIFICATIONS

- **Resolutions:**
  - 30m (1/3 arc second)
  - 90m (1 arc second)
- **Coverage options:** Global, continental, country or custom areas (cost per sq km)
- **Source data:** ALOS World 3D - 30m, NASADEM
- **Accuracy:** 7m vertical and horizontal
- **Projection/Datum:** Geographic WGS84
- **File formats and global data size:**
  - 30m: 627 GB in GeoTIFF, 454 GB in DTED2
  - 90m: 70 GB in GeoTIFF, 50 GB in DTED1
- **Tiling structure:** 1°x 1°
- **Available:** per FTP, WCS, API

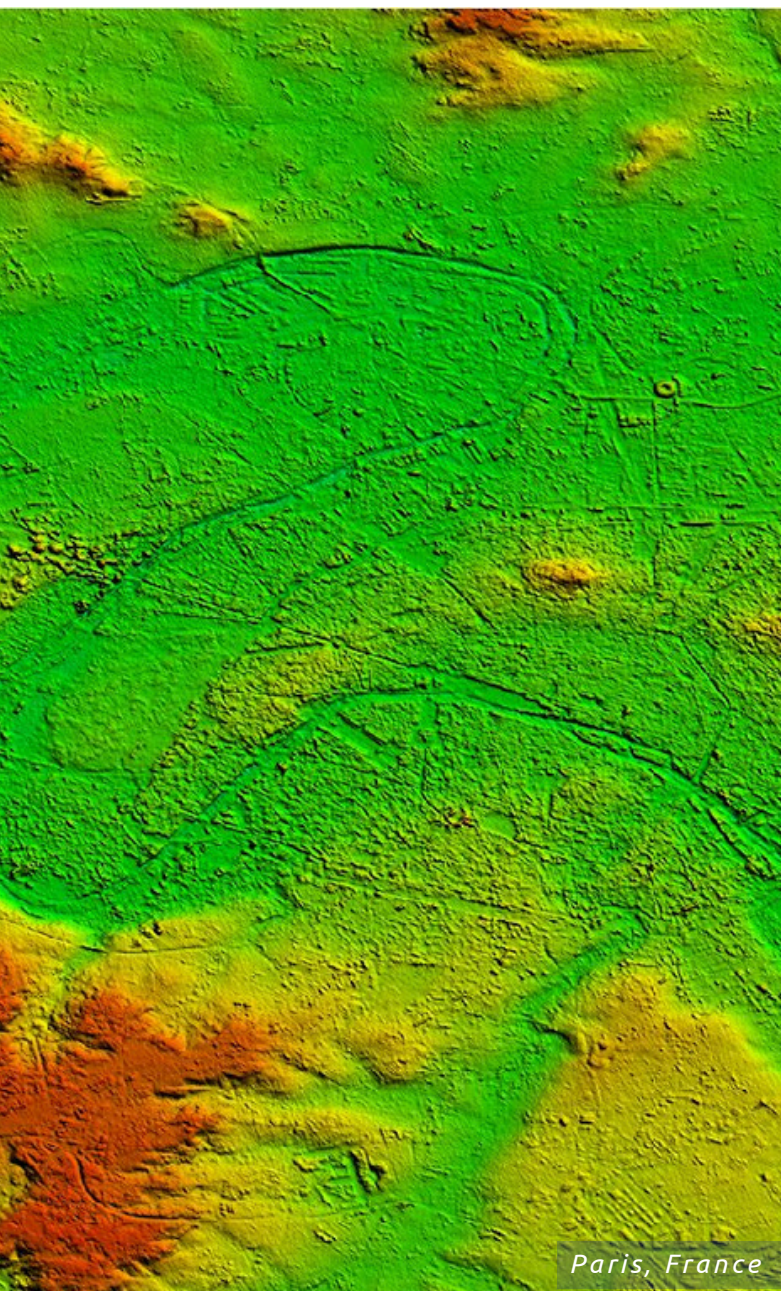
## KEY BENEFITS

- ✓ Off-the-shelf data
- ✓ Online and offline delivery
- ✓ Easy integration as base layers into all GIS applications, visualization and simulation tools and GEOINT solutions.

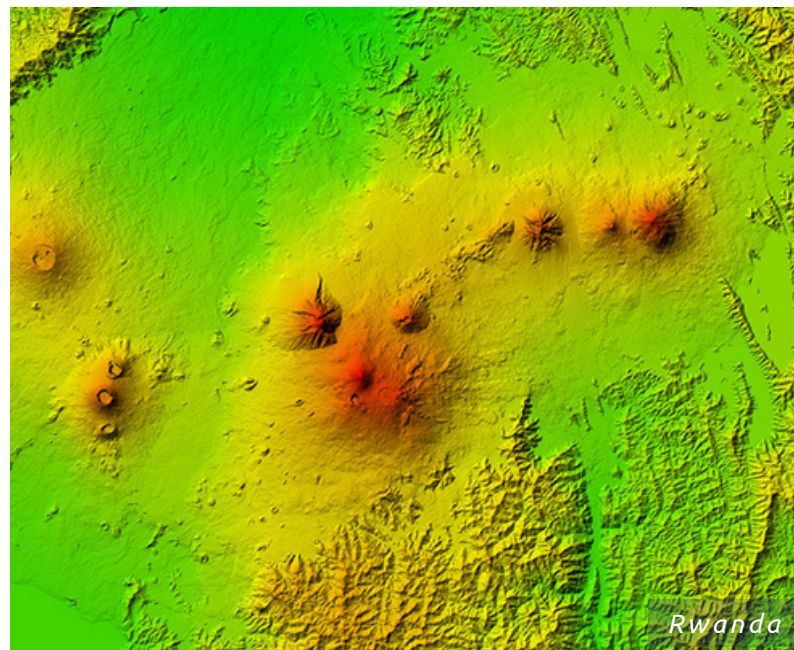




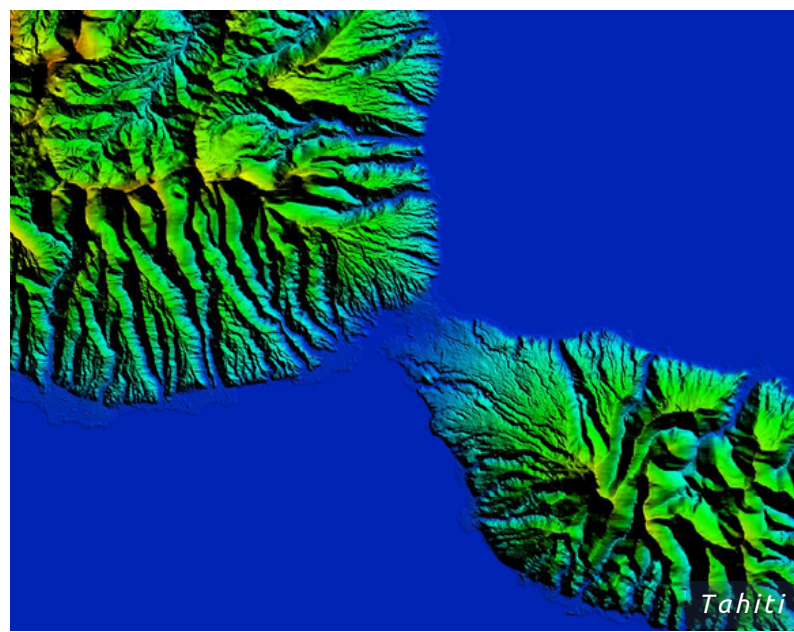
*Mont Blanc, Europe*



*Paris, France*



*Rwanda*



*Tahiti*



# Elevation Solution for many Industries

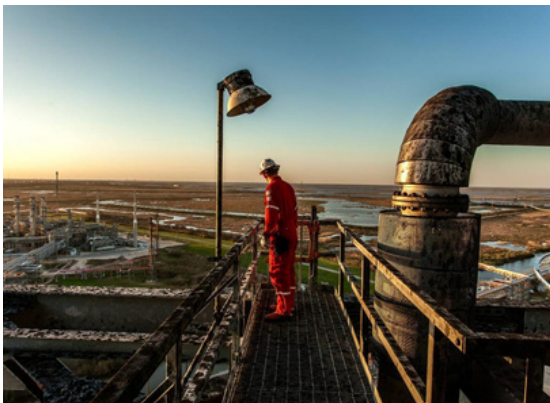
BETTER PERFORMANCES FOR ALL GLOBAL APPLICATIONS

## DEFENSE & INTELLIGENCE

- Command and Control : Macro visualisation of large theatres of operation (TO)
- Mission planning
- Mission management system
- Visualization & navigation solutions

## GRAPHICS & ANIMATION

- News & weather graphics systems
- Inflight Entertainment (IFE)



## AEROSPACE

- Flight training & simulation (adapted for Full Flight Simulators - FFS)
- Realistic environment building and visualization

## MAPPING

- Mapping platforms
- GIS solutions for land administration and mapping, oil & gas, government

## Trusted by Industry Leaders



Collins Aerospace



GENERAL  
DYNAMICS



L3HARRIS™



Sogitec



TotalEnergies

## Why using commercial data vs. open source

*Opting for open-source data may appear to be a good idea at first glance, but, here's why it may not be...*

### OPEN-SOURCE DATA

- NO data protection
- NO confidentiality
- NO precise knowledge of sources and metadata
- NO security and risk management
- NO support & maintenance

### PLANETOBSERVER DATA

- COMPLETE data protection
- COMPLETE confidentiality
- THOROUGH knowledge of sources and metadata
- COMPLETE security and risk management
- FULL support & maintenance

## PLANETOBSERVER

Clermont-Ferrand  
France

+33 (0) 4 73 44 19 00

info@planetobserver.com

www.planetobserver.com

## CONTACT

Marie-Pierre BOUTIN

Sales & Marketing Director

+33 (0) 6 80 05 61 94

+33 (0) 4 73 44 19 00

mp.boutin@planetobserver.com

